

MONTHLY MEMBERSHIP PROGRESS REPORT

District 3234D1

Results as of: 6/30/2024

GMT:

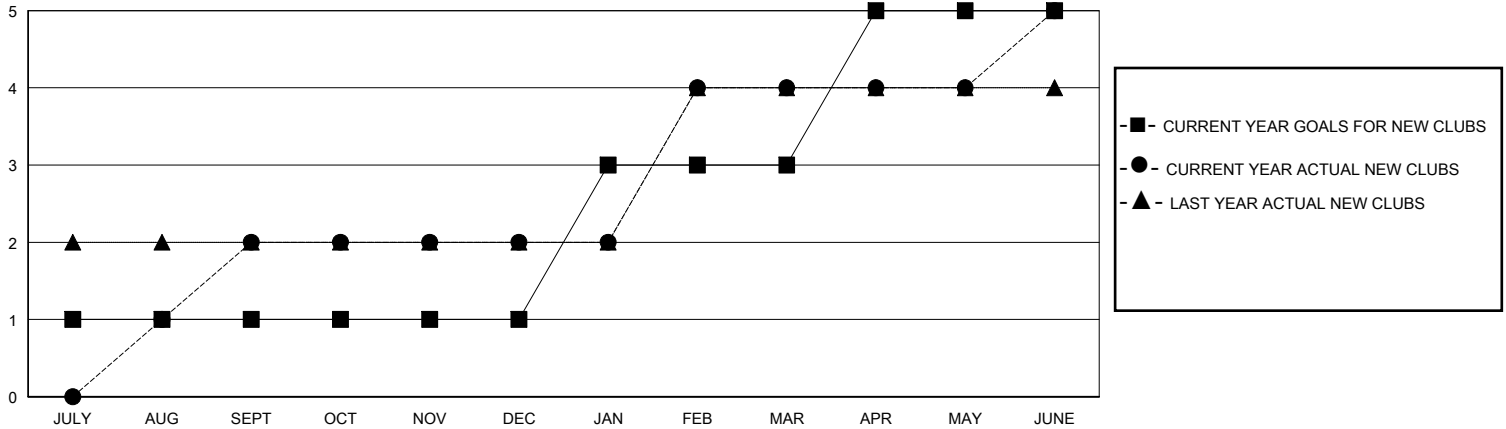
LOCATION INDIA

GMT CA

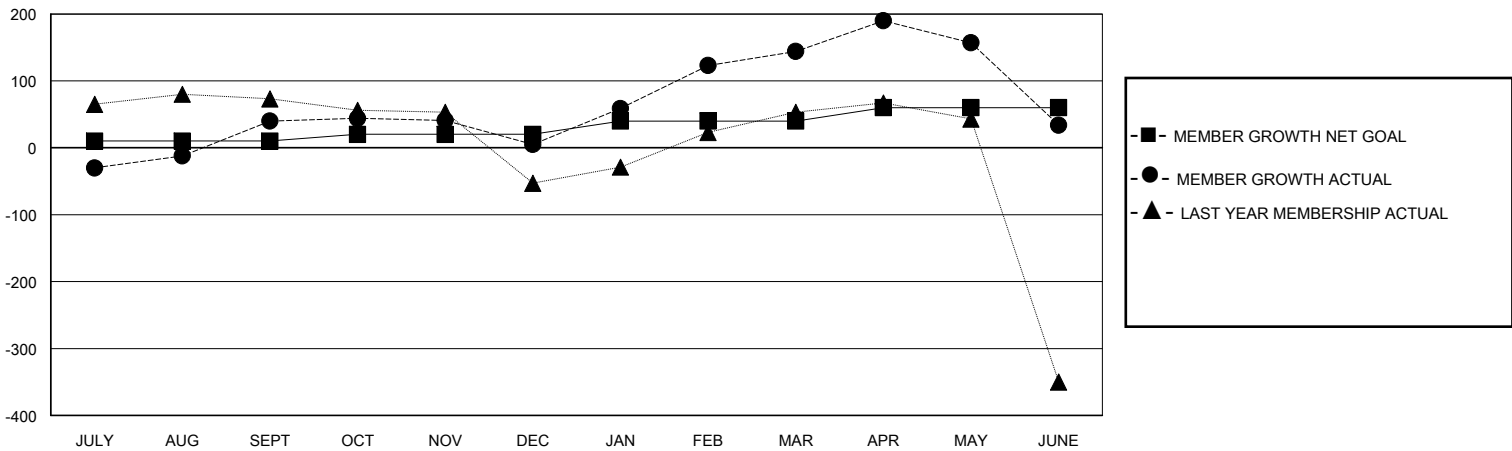
Clubs			
RESULTS FOR 2023-2024			
QUARTER	NEW CLUB GOAL	NEW CLUBS	DROPPED CLUBS
JULY/AUG/SEPT	1	2	2
OCT/NOV/DEC	0	0	3
JAN/FEB/MAR	2	2	0
APR/MAY/JUNE	2	1	2

Members			
RESULTS FOR 2023-2024			
QUARTER	MEMBER GROWTH NET GOAL	MEMBER GROWTH ACTUAL	DROPPED MEMBERS ACTUAL (including transfers)
JULY/AUG/SEPT	10	171	106
OCT/NOV/DEC	10	69	102
JAN/FEB/MAR	20	151	6
APR/MAY/JUNE	20	165	265

GOALS AND ACTUAL NEW CLUBS CUMULATIVE



GOALS AND ACTUAL MEMBERS CUMULATIVE



DROPPED CLUBS: 7	61 CLUBS OF 85 ADDED 1 OR MORE NEW MEMBERS	GENDER DISTRIBUTION	
		MALE 1,870 (71.27%)	FEMALE 754 (28.73%)
DROPPED MEMBERS		CLICK HERE FOR CUMULATIVE MEMBERSHIP DATA	TOTAL FAMILY UNIT MEMBERS 962
DECEASED 11	CLUB CANCELLED 114		FAMILY MEMBERS PAYING HALF DUES 498
OTHER 354	TOTAL 479		